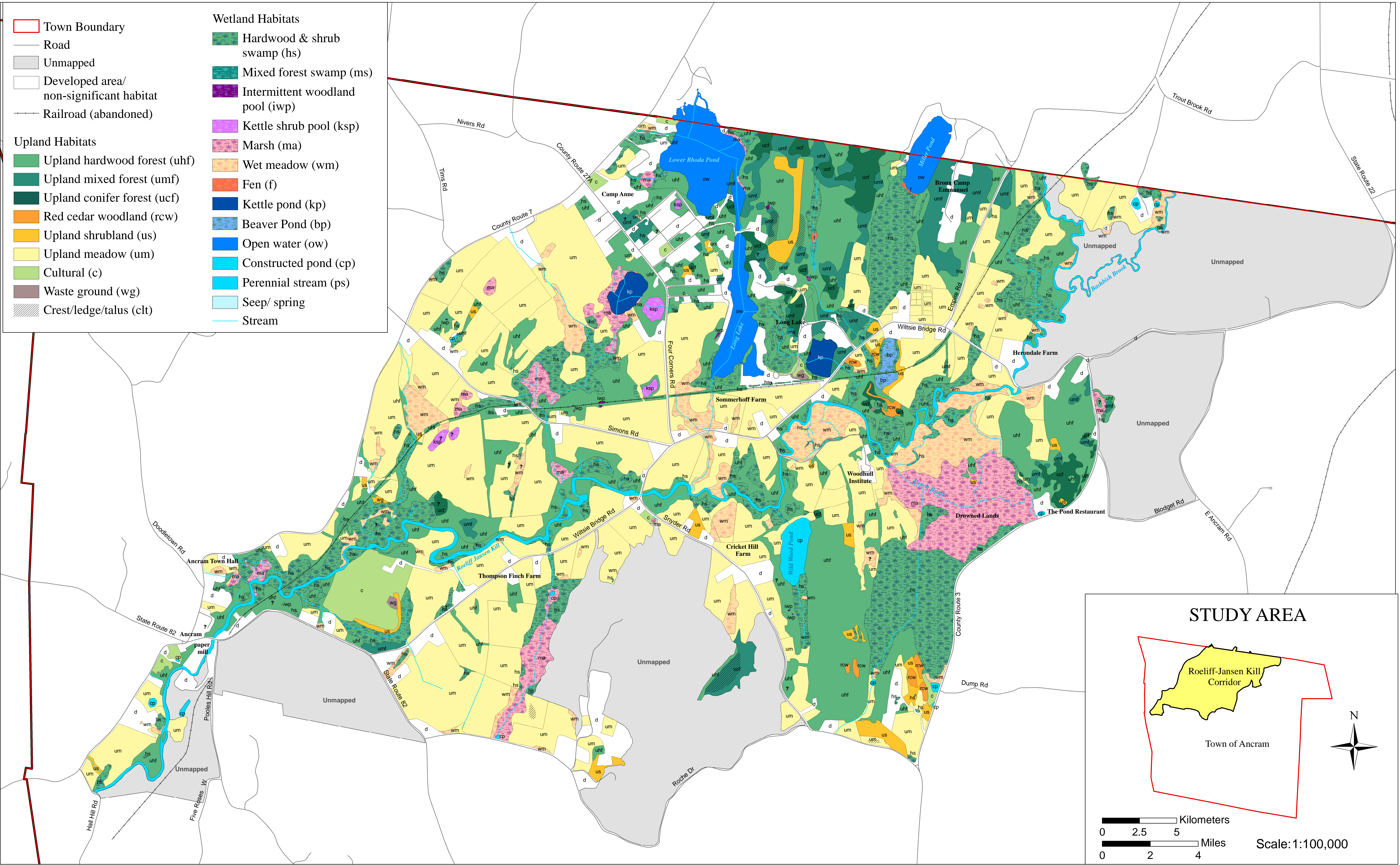


SIGNIFICANT HABITATS IN THE ROELIFF-JANSEN KILL CORRIDOR

TOWN OF ANCRAM, COLUMBIA COUNTY, NY



This map was prepared in 2001-2002 by a team of Ancram volunteers engaged in a Biodiversity Assessment Training program led by Hudsonia Ltd. The team included members of the Town of Ancram planning board, zoning board of appeals, and interested citizens: Douglas Clapp, Choral Eddie, Tad Higgins, Jamie Purinton, and Leah Wilcox. Habitats were identified through map analysis and aerial photograph interpretation, and as many locations as practicable were field-verified. The original hand-drawn map prepared by the team was digitized by Don Meltz, Planning and GIS. In 2009 - 2010 Hudsonia biologists made corrections to the draft map using remote sensing and assisted by additional field observations of the biodiversity assessment team.

Color infrared and black and white photographs in the USGS NAPP series, taken in the spring of 1994 and 1997, respectively, (scale 1:40,000) were used for stereoscopic photointerpretation. Hudsonia digitized corrected habitats onscreen over color infrared orthophoto images taken in spring 2001 obtained from the New York State GIS Clearinghouse. Road locations and names were obtained from the New York State GIS Clearinghouse website and modified by Hudsonia where necessary.

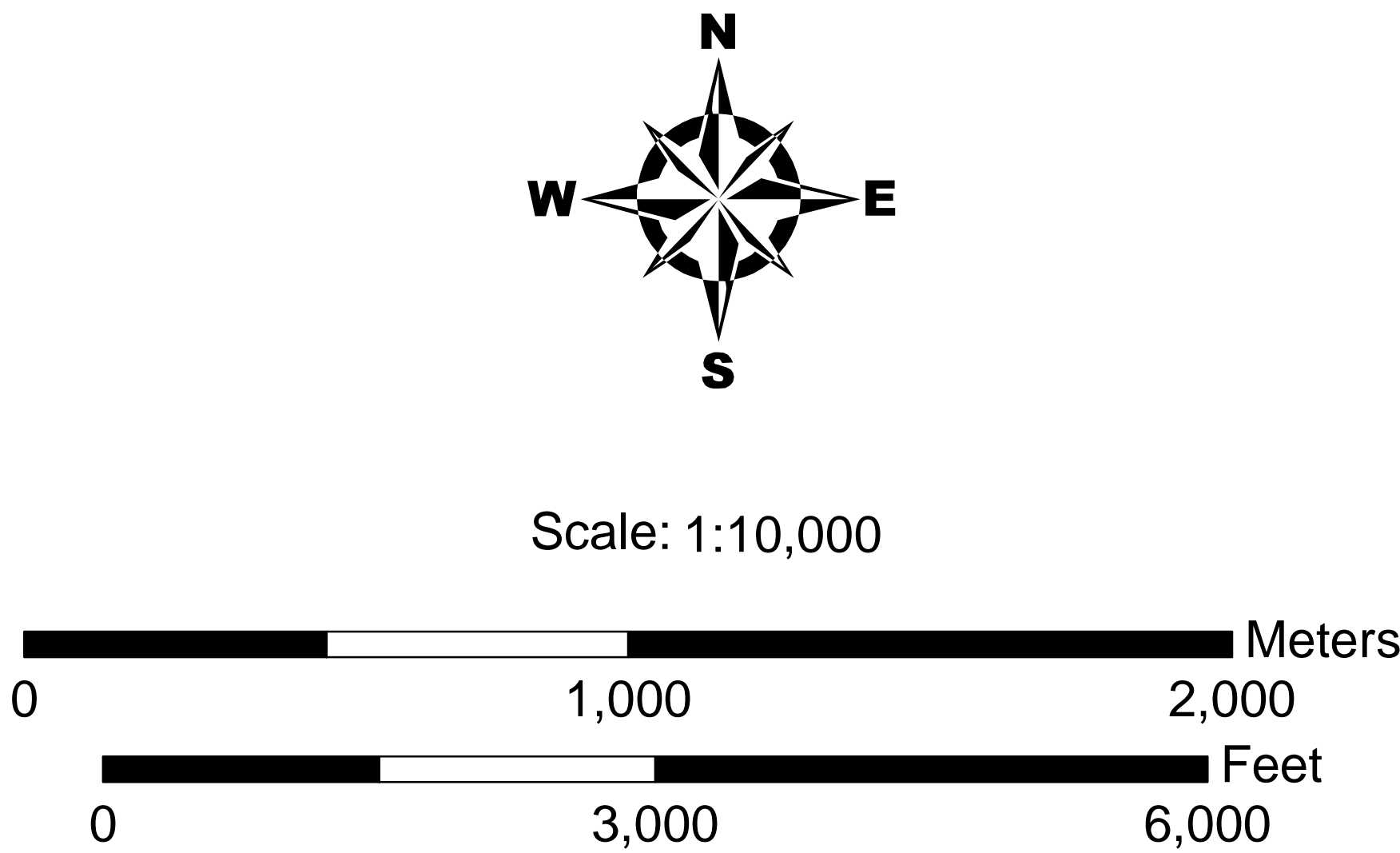
Some habitat types can only be identified in the field. Question marks on the map indicate where such habitats may occur in areas not visited in the field, and other locations where habitats were not confidently identified.

The report prepared in conjunction with this map (Ancram Biodiversity Assessment Team 2009) explains the habitat identification and mapping methods, describes the ecological significance of each habitat type, and offers conservation recommendations.

This map was created using ArcView 9.2 GIS software, and printed on an Hewlett Packard DesignJet 800PS plotter.

Funds for the Biodiversity Assessment Training project were provided to Hudsonia Ltd. by the New York State Environmental Protection Fund through the Hudson River Estuary Program of the New York State Department of Environmental Conservation.

For more information contact Jamie Purinton, Town of Ancram, (jamiepurinton@fairpoint.net; 518-329-2337) or Gretchen Stevens, Hudsonia Ltd., (stevens@bard.edu, 845-758-0600).



An important caution:

This map is suitable for general land-use planning, but is not suitable for detailed planning and site design, or for jurisdictional determinations (e.g., for wetlands). Boundaries of wetlands and other habitats depicted here are only approximate.